

Product Code: HM204VKCBW4

Flow Designation: Scheme 0

Actuation: Actuator (300 psi)

Working Pressure: Max. 300 psi (2 MPa)

Body Size: 1/4"

Inlet Connection: Short Buttweld

Outlet Connection: Short Buttweld

Connection Size: 1/4"

Body Material: Bar Stock SS 316L Vim/Var

Temperature Range: -10°C to 60°C

Leak Rate - Inboard: $\leq 3 \cdot 10^{-11}$ atm · cc/sec (He)

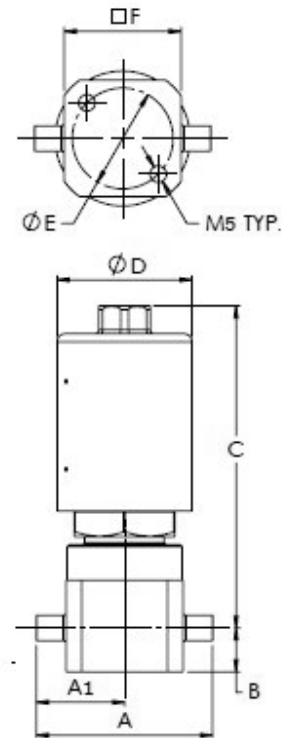
Leak Rate - Across Seat: $\leq 1 \cdot 10^{-9}$ atm · cc/sec (He)

CV: 0.3

Seat Material: PCTFE

Actuator Type: Normally Close

Limit Switch: No Limit Switch



Param	inch	mm
A	1.75	44.4
A1	0.87	22.2
B	0.43	11
C	3.5	89
D	1.34	34
E	1	25.4
F	1.16	29.4

THIS DRAWING AND INFORMATION INCLUDED, ARE CONFIDENTIAL PROPERTY OF HAM-LET LTD AND ARE LOANED TO YOU FOR A LIMITED PURPOSE. NEITHER TO BE COPIED EXHIBITED OR FURNISHED TO OTHERS IN ANY FORM WITHOUT THE WRITTEN CONSENT OF HAM-LET LTD.



HAM-LET GROUP LTD
info@ham-let.com

Part No. HM204VKCBW4

Catalog Number N/A

HM Series, Low Pressure UHP Actuated Valve, Short Buttweld 1/4"