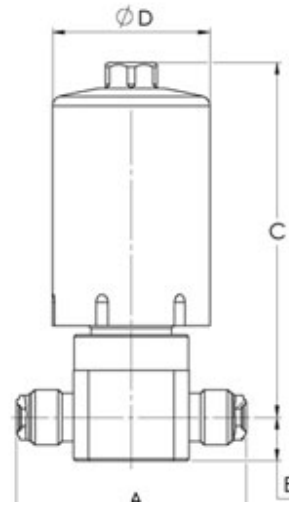
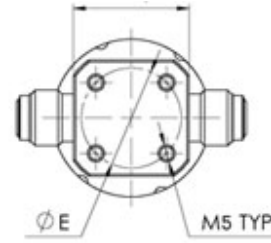


Product Code:	HP204VKHCM4
Product Name:	HP20 - Med Temp. Med Flow - 2 Port UCV
Actuation:	Actuator
Flow Designation:	Scheme 0
Body Size:	1/4"
Connection Type:	Male Face Seal
Connection Size:	1/4"
Body Material:	Bar Stock SS 316L Vim/Var
Seat Type:	PCTFE Seat
Temperature Range:	-10°C to 60°C
Max Pressure:	3060 psi (21 MPa)
Leak Rate - Inboard:	$\leq 3 \cdot 10^{-11}$ atm · cc/sec (He)
Leak Rate - Across Seat:	$\leq 1 \cdot 10^{-9}$ atm · cc/sec (He)
CV:	0.23
Actuator Type:	Normally Close
Actuation Pressure:	60 to 90 psi (4 to 6 bar)



Param	inch	mm
A	2.3	58.4
B	0.43	11
C	3.54	90
D	1.57	40
E	1	25.4
F	1.16	29.4

THIS DRAWING AND INFORMATION INCLUDED, ARE CONFIDENTIAL PROPERTY OF HAM-LET LTD AND ARE LOANED TO YOU FOR A LIMITED PURPOSE. NEITHER TO BE COPIED EXHIBITED OR FURNISHED TO OTHERS IN ANY FORM WITHOUT THE WRITTEN CONSENT OF HAM-LET LTD.



HAM-LET GROUP LTD
info@ham-let.com

Part No. HP204VKHCM4

Catalog Number N/A

HP Series, High Pressure High Purity, Actuated Valve, Male Face Seal
1/4"