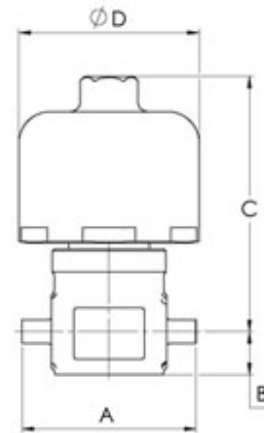
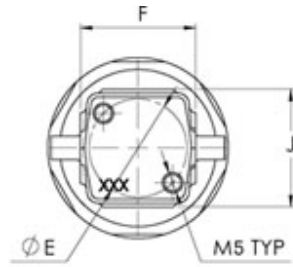


Product Code:	2LDS8CBV
Actuation:	Actuator
Body Size:	1/2"
Connection Type:	Male Face Seal
Connection Size:	1/2"
Body Material:	Forged SS 316L
Max Pressure:	150 psi (1 MPa)
Temperature Range:	-10°C to 60°C
Leak Rate - Inboard:	$\leq 3 \cdot 10^{-12}$ Pa · m ³ /sec (He)
Leak Rate - Across Seat:	$\leq 3 \cdot 10^{-12}$ Pa · m ³ /sec (He)
CV:	0.7
Seat Material:	PCTFE
Actuator Type:	Normally Close
Actuation Pressure:	60 to 90 psi (4 to 6 bar)



Param	inch	mm
A	2.99	76
B	0.69	17.5
C	2.89	73.5
D	2.20	56
E	1.1	28
F	1.46	37
J	1.46	37

THIS DRAWING AND INFORMATION INCLUDED, ARE CONFIDENTIAL PROPERTY OF HAM-LET LTD AND ARE LOANED TO YOU FOR A LIMITED PURPOSE. NEITHER TO BE COPIED EXHIBITED OR FURNISHED TO OTHERS IN ANY FORM WITHOUT THE WRITTEN CONSENT OF HAM-LET LTD.



HAM-LET GROUP LTD
info@ham-let.com

Part No. 2LDS8CBV

Catalog Number N/A

2LD Series, Low Pressure UHP Actuated Valve, Male Face Seal 1/2"